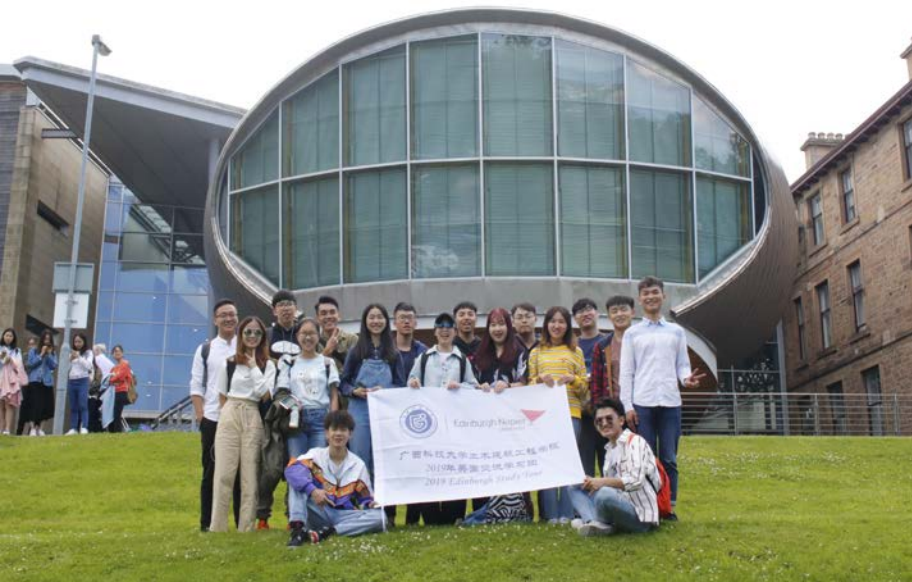




# EM Summer Programme *Edinburgh Scotland 2021*



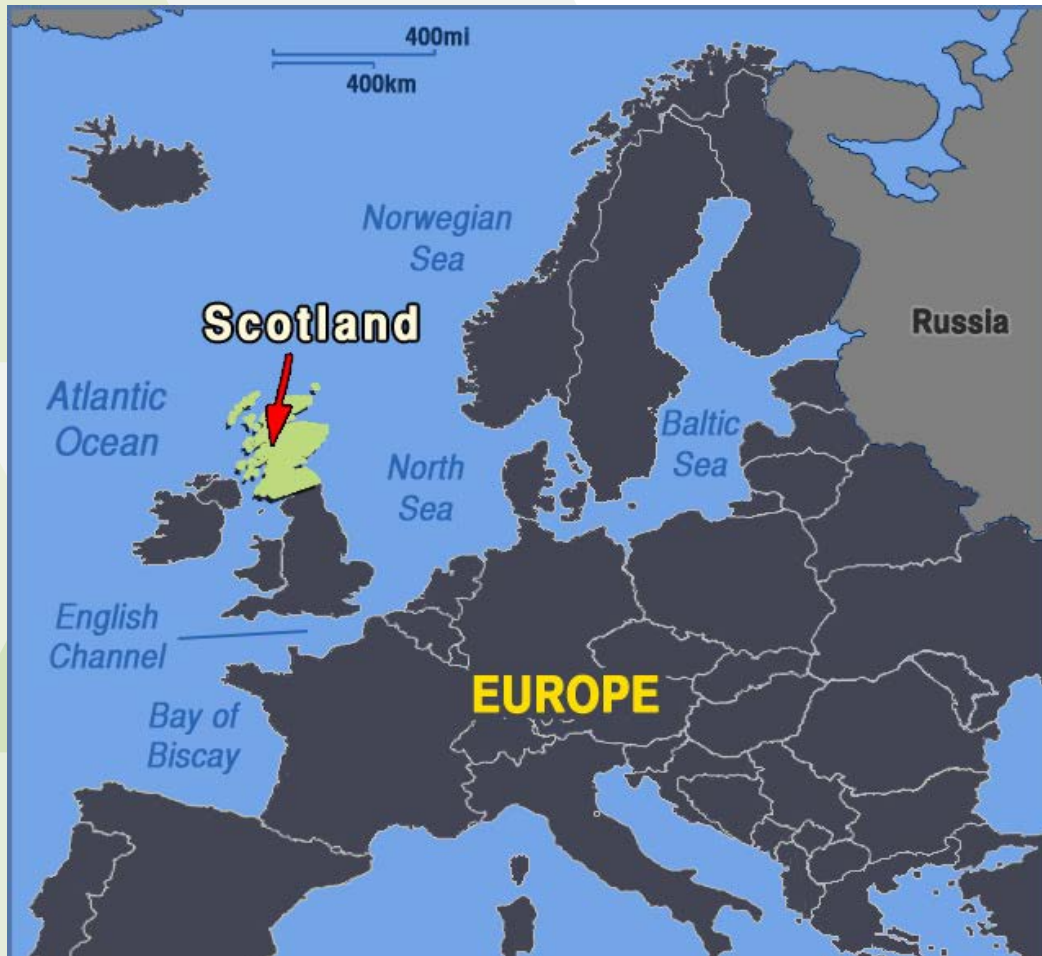




***Learn the language  
Learn about the culture***



Edinburgh Napier  
UNIVERSITY





# Language, Culture and Study Summer Programme

This summer programme includes pre-departure and post-visit workshops in Taiwan; and a 14-day educational visit in Scotland.

During the 14-day educational visit, you will have classroom lectures and workshops, participating in renowned festivals and events, plus cultural visits, and excursions to various parts of Scotland.

This programme aims to broaden your global outlook and allow you to have a systematic learning of a new culture (i.e. the Scottish festivals, food and drink, art, people, architecture, social entertainment and lifestyle).



# Language, Culture and Study Summer Programme

28 – 30 June 2021

Pre-departure workshop at ISU

1-14 August 2021

2 Weeks learning and experiencing in Scotland

- English & Culture workshops at ENU
- Event Management Classes at ENU
- Participate in Festivals in Edinburgh
- Cultural visits in Edinburgh
- Day trips to various places in Scotland

7 Sept 2021

Post-visit workshop at ISU



# Programme Details

## **Pre-departure Workshop**

(28 – 30 June 2021)

- Briefing and ice-breaking
- Introduction to Scottish culture
- Introduction to events and festivals in Edinburgh
- Scottish whisky appreciation and tasting
- ZOOM session with ENU teachers



# Programme Details

## **2 Weeks Learning & Experiencing in Scotland** (1-14 August 2021)

- 12 hours per week of English language and British culture workshops
- 4 hours per week of Festival, Event and Hospitality Management classes
- Self-catering accommodation in Edinburgh Napier student
- Accommodation Transfers to and from Edinburgh Airport
- Welcome breakfast and graduation lunch
- Lothian bus travel passes
- A varied programme of cultural visits, evening events and trips





# Programme Details

## **2 Weeks Learning & Experiencing in Scotland** (1-14 August 2021)

- Cultural visit: Edinburgh Castle and a walking tour of the Old Town
- Cultural visit: National Museum of Scotland
- Cultural visit: Palace of Holyrood House and the Scottish Parliament
- Evening event: an Edinburgh Fringe Festival Show
- Evening event: Edinburgh Military Tattoo
- Evening event: Ceilidh Dancing
- Day trip: Dunkeld, the Hermitage and Blair Athol Distillery
- Day trip: St Andrews and Falkland Palace
- Weekend day trip: The Scottish Highlands





# Programme Details

## **Post-visit Workshop** (7 Sept 2021)

- Self-Reflection and Sharing Session
- Tea Gathering

During your entire stay in Edinburgh, full student support from both I-Shou University and Edinburgh Napier University will be provided in handling local transportation, Edinburgh Fringe Festival Show and Edinburgh Military Tattoo tickets, student accommodation and some of your meals, while also providing insight into the local history and culture as well as great local tips!

# Edinburgh Napier University

Edinburgh Napier University is an innovative and professional university committed to giving students the right mix of academic, personal and professional skills needed for a successful career in today's global market.

We offer industry-informed courses which combine the optimum balance of theory and practice to equip graduates for success in today's competitive global job market. That is why we are one of the UK's top 10 universities for graduate employability. We are one of the largest higher education institutions in Scotland, with nearly 20,000 students from more than 140 countries.

## Facts

- Five QS Stars winner for teaching, employability and internationalisation
- Winners of Queen's Anniversary Prize 2015
- 95% graduate employability rate (HESA 2015/16)
- More than half of research rated "world leading" or internationally excellent
- 360 start-ups supported in 10 years



ENU 3 modern campuses: Sighthill, Merchiston, and Craiglockhart





# EDINBURGH

Edinburgh is the inspiring capital of Scotland, where centuries of history meet a vibrant, cosmopolitan city in an unforgettable setting.

Stunning scenery  
and striking architecture

A UNESCO World Heritage Site

Fine food

Beautiful coast  
and countryside nearby



*What's more, Edinburgh hosts the world's largest art festivals – the Edinburgh Festival Fringe and the Edinburgh International Festival - where thousands of artists and millions of tourists gather to celebrate arts and entertainment for 3 weeks every August.*

Edinburgh Napier  
UNIVERSITY



## EDINBURGH NAPIER UNIVERSITY

### Five QS Stars



for teaching, employability  
and internationalisation

Winners of the  
Queen's  
Anniversary  
Prize 2015  
in timber engineering,  
sustainable construction  
and wood science

**95%+**

of our graduates are  
in work or further  
education within six  
months of graduating

HESA 2016/17

**>50%**

of our research rated  
"world-leading" or  
"internationally excellent"

**>500**

start ups have  
been supported  
by our in-house  
business incubator

# Edinburgh in August

- Temperature: 15°C to 18°C
- Festive month in Edinburgh
  - Edinburgh International Festival 6-29 August
  - The Royal Edinburgh Military Tattoo 6-28 August
  - Edinburgh Festival Fringe 6-30 August
  - Edinburgh Art Festival 29 July-29 August
  - Edinburgh Foodies Festival 6-8 August





## Scotland and the Highlands

Scotland is a country with a fantastic mix of stunning landscapes, a thriving arts and culture scene, and a colourful history of epic battles and historic castles.

The Highlands is the Scotland of your imagination: a beautiful and inspiring region of ancient landscapes with a fascinating history. As a participant on one of our summer school/short courses, you will have to the opportunity to visit lochs and glens, to witness amazing Scottish wildlife, to lose yourself in Scotland's heroic stories, to take part in a world-class whisky distillery tour, or to try golf on a world-class golf course. Scotland's history, nature, and geography will take your breath away.



## Edinburgh

Edinburgh, the inspiring capital of Scotland, where centuries of history meet a vibrant, cosmopolitan city in an unforgettable setting.

Stunning scenery, striking architecture, fine food, and beautiful coast and countryside are only steps away from each other. From a UNESCO World Heritage Site to world-class visitor attractions and exhilarating outdoor pursuits, Edinburgh is a must-visit on anyone's list. What's more, Edinburgh hosts the world's largest art festivals – the Edinburgh Festival Fringe and the Edinburgh International Festival – where thousands of artists and millions of tourists gather to celebrate arts and entertainment for 3 weeks every August.











**Fun and challenging  
classes  
with  
dynamic teachers**





**Learn about the  
history, traditions,  
and culture of  
Scotland**







Learn Ceilidh Dancing!



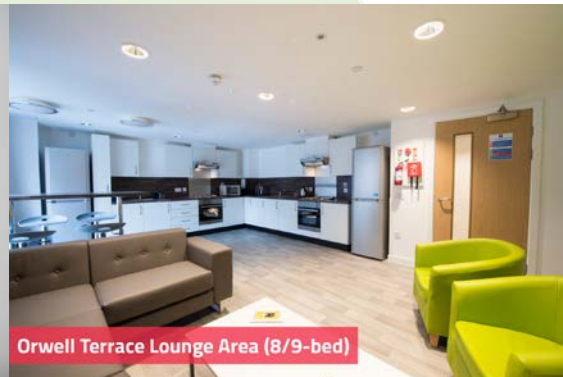
# Where to Stay?

## Self-catering Accommodation

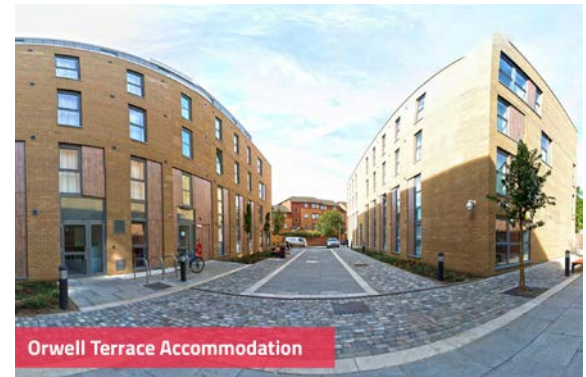
- Student accommodation – en suite single room inside ENU campus
- including bedding packs, cookery, cutlery and other kitchen amenities for 13 nights
- Free WiFi access at student accommodation



Orwell Terrace Standard Bedroom



Orwell Terrace Lounge Area (8/9-bed)



Orwell Terrace Accommodation





# Certificate

A Certificate of Attendance issued jointly by I-Shou University and Edinburgh Napier University will be awarded.



# Programme Fee

Programme Fee is listed below according the total number of enrolled students:

\*If we have fewer than 30 students: GBP2150

If we have 30 students or more: GBP1660

\*A minimum of 10 students for enrolment is needed to make the programme happen





# INCLUDES:

- Pre-departure workshops (including Scottish culture, background, whisky appreciation)
- Post-visit workshop
- 24 hours of English language and British culture workshops
- 8 hours of Festival, Event and Hospitality Management classes
- Transfers to and from Edinburgh Airport
- Welcome breakfast and graduation lunch
- Lothian bus travel passes
- Accommodation of your choice (homestay or self-catering accommodation)
- Entrance ticket to one Fringe Festival show
- Entrance ticket to the Royal Edinburgh Military Tattoo
- Cultural visits and day trips as listed
- Full student support
- Group travel insurance
- 24-hour emergency contact number



## EXCLUDES:

- Round trip flight tickets
- Most meals (those not listed in the visit schedule)
- Individual travel insurance
- Launderette
- Visa application fee, if applicable
- Other personal expenses



# Language, Culture and Study Summer Programme

Registration: **from NOW till 1 April 2021**

Contact Person:

**Dr. Grace Ho**

**Dept. of Entertainment Management**

**Email: [graceho@isu.edu.tw](mailto:graceho@isu.edu.tw)**

**Office: 60903-B**

**Phone: +886-7-65-77711 Ext 8864**

